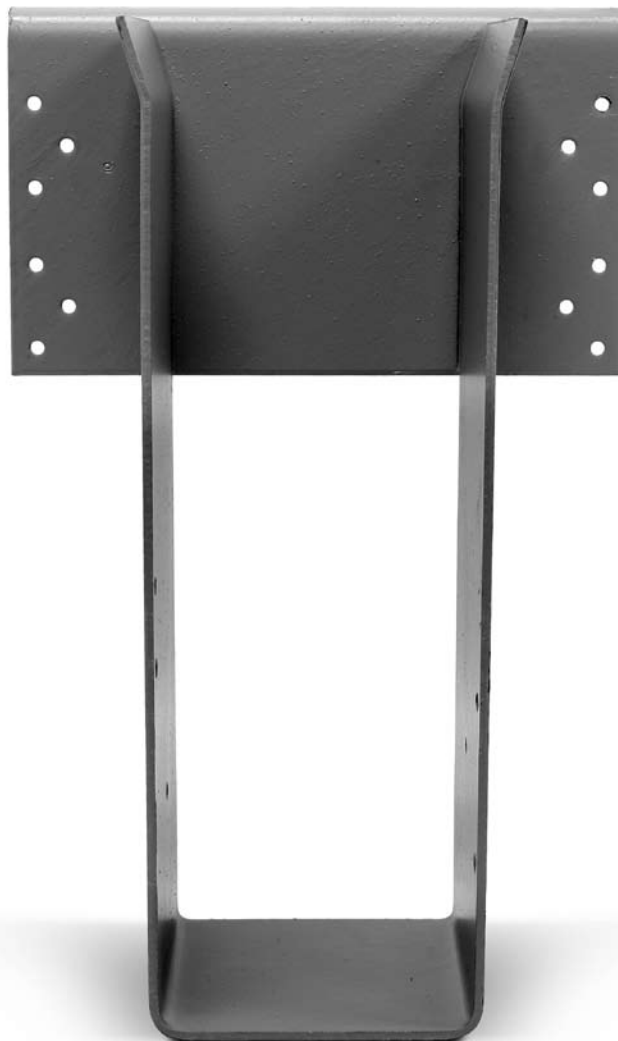
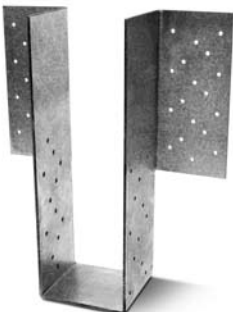


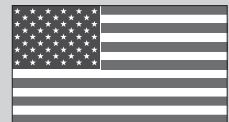
# CONNECTOR SELECTION GUIDE



FOR USE WITH PRODUCTS  
MANUFACTURED BY:



This guide lists popular options for Simpson Strong-Tie® hangers used with engineered wood products. Not all available hanger and installation combinations are listed. Use in conjunction with the current Simpson Strong-Tie *Wood Construction Connectors* catalog for detailed hanger information.



**ALLOWABLE  
STRESS DESIGN**

**DISTRIBUTED BY:**

**800-999-5099  
[www.strongtie.com](http://www.strongtie.com)**

CSG-XBEAM 12/10  
exp. 1/13

# CONNECTOR SELECTOR NOTES



## General Notes

1. See current *Wood Construction Connectors* catalog for Important Information and General Notes section and for hanger models, joist sizes, and header situations not shown.
2. Unless otherwise noted, downloads listed address hanger/header/fastener limitations assuming header material is Douglas Fir-Larch or Southern Pine. Loads are in pounds. Beam reaction should be checked by a qualified designer to ensure proper hanger selection.
3. Uplift loads have been increased by 60% for earthquake and wind loading with no further increase allowed. Reduce loads according to code for normal duration loading such as cantilever construction.
4. Top flange hanger configuration and thickness of top flange need to be considered for flush frame conditions.
5. Supporting members must be at least 3½" thick.
6. All nails shown are common nails unless otherwise noted.
7. See current *Wood Construction Connectors* catalog for additional hanger options.

## 3½" ROSBORO X-BEAM - U.S./Allowable Load (lbs.)

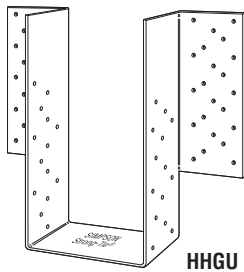
| Beam Height      | Face Mount  |       |              |            |              |           | Top Flange         |       |              |            |              |           |
|------------------|-------------|-------|--------------|------------|--------------|-----------|--------------------|-------|--------------|------------|--------------|-----------|
|                  | Model       | B Dim | Header Nails | Beam Nails | Uplift (160) | Down Load | Model¹             | B Dim | Header Nails | Beam Nails | Uplift (160) | Down Load |
| Beam Width = 3½" |             |       |              |            |              |           |                    |       |              |            |              |           |
| 6                | HHUS46      | 3     | 14-16d       | 6-16d      | 1550         | 2785      | B3.56X (H1=6)      | 2½    | 14-16d       | 6-16d      | 1010         | 3800      |
|                  | HGUS46      | 4     | 20-16d       | 8-16d      | 2155         | 4360      |                    |       |              |            |              |           |
| 7½               | HHUS48      | 3     | 22-16d       | 8-16d      | 2000         | 4210      | B3.56X (H1=7.5)    | 2½    | 14-16d       | 6-16d      | 1010         | 3800      |
|                  | HGUS48      | 4     | 36-16d       | 12-16d     | 3235         | 7460      |                    |       |              |            |              |           |
| 9                | HHUS48      | 3     | 22-16d       | 8-16d      | 2000         | 4210      | B3.56X (H1=9)      | 2½    | 14-16d       | 6-16d      | 1010         | 3800      |
|                  | HGUS48      | 4     | 36-16d       | 12-16d     | 3235         | 7460      | HB3.56X (H1=9)     | 3½    | 22-16d       | 10-16d     | 2610         | 5650      |
| 9½               | HHUS48      | 3     | 22-16d       | 8-16d      | 2000         | 4210      | HB3.56/9.5         | 3½    | 22-16d       | 10-16d     | 2610         | 5650      |
|                  | HGUS48      | 4     | 36-16d       | 12-16d     | 3235         | 7460      | HWU3.56/9.5        | 3¼    | 8-16d        | 6-N10      | 810          | 6600      |
| 10½              | HHUS410     | 3     | 30-16d       | 10-16d     | 3735         | 5635      | HB3.56X (H1=10.5)  | 3½    | 22-16d       | 10-16d     | 2610         | 5650      |
|                  | HGUS410     | 4     | 46-16d       | 16-16d     | 4095         | 9100      | HWU3.56X (H1=10.5) | 3¼    | 8-16d        | 6-N10      | 810          | 6600      |
| 11½              | HHUS410     | 3     | 30-16d       | 10-16d     | 3735         | 5635      | HB3.56/11.88       | 3½    | 22-16d       | 10-16d     | 2610         | 5650      |
|                  | HGUS410     | 4     | 46-16d       | 16-16d     | 4095         | 9100      | GLT4               | 5     | 10-N54A      | 6-N54A     | 1745         | 8165      |
| 12               | HHUS410     | 3     | 30-16d       | 10-16d     | 3735         | 5635      | HB3.56X (H1=12)    | 3½    | 22-16d       | 10-16d     | 2610         | 5650      |
|                  | HGUS410     | 4     | 46-16d       | 16-16d     | 4095         | 9100      | GLT4               | 5     | 10-N54A      | 6-N54A     | 1745         | 8165      |
| 13½              | HHUS410     | 3     | 30-16d       | 10-16d     | 3735         | 5635      | HB3.56X (H1=13.5)  | 3½    | 22-16d       | 10-16d     | 2610         | 5650      |
|                  | HGUS414     | 4     | 66-16d       | 22-16d     | 5515         | 10100     | GLT4               | 5     | 10-N54A      | 6-N54A     | 1745         | 8165      |
| 14               | HHUS410     | 3     | 30-16d       | 10-16d     | 3735         | 5635      | HB3.56X (H1=14)    | 3½    | 22-16d       | 10-16d     | 2610         | 5650      |
|                  | HGUS414     | 4     | 66-16d       | 22-16d     | 5515         | 10100     | GLT4               | 5     | 10-N54A      | 6-N54A     | 1745         | 8165      |
| 15               | HGUS410     | 4     | 46-16d       | 16-16d     | 4095         | 9100      | GLT4               | 5     | 10-N54A      | 6-N54A     | 1745         | 8165      |
|                  | HGUS414     | 4     | 66-16d       | 22-16d     | 5515         | 10100     | HGLT4              | 6     | 18-N54A      | 6-N54A     | 1745         | 11930     |
| 16               | HGUS410     | 4     | 46-16d       | 16-16d     | 4095         | 9100      | GLT4               | 5     | 10-N54A      | 6-N54A     | 1745         | 8165      |
|                  | HGUS414     | 4     | 66-16d       | 22-16d     | 5515         | 10100     | HGLT4              | 6     | 18-N54A      | 6-N54A     | 1745         | 11930     |
| 16½              | HGUS410     | 4     | 46-16d       | 16-16d     | 4095         | 9100      | GLT4               | 5     | 10-N54A      | 6-N54A     | 1745         | 8165      |
|                  | HGU3.63-SDS | 5¼    | 36-SDS       | 24-SDS     | 9895         | 14145     | HGLT4              | 6     | 18-N54A      | 6-N54A     | 1745         | 11930     |
| 18               | HGUS414     | 4     | 66-16d       | 22-16d     | 5515         | 10100     | GLT4               | 5     | 10-N54A      | 6-N54A     | 1745         | 8165      |
|                  | HGU3.63-SDS | 5¼    | 36-SDS       | 24-SDS     | 9895         | 14145     | HGLT4              | 6     | 18-N54A      | 6-N54A     | 1745         | 11930     |
| 19½              | HGUS414     | 4     | 66-16d       | 22-16d     | 5515         | 10100     | GLT4               | 5     | 10-N54A      | 6-N54A     | 1745         | 8165      |
|                  | HGU3.63-SDS | 5¼    | 36-SDS       | 24-SDS     | 9895         | 14145     | HGLT4              | 6     | 18-N54A      | 6-N54A     | 1745         | 11930     |
| 21               | HGUS414     | 4     | 66-16d       | 22-16d     | 5515         | 10100     | HGLT4              | 6     | 18-N54A      | 6-N54A     | 1745         | 11930     |
|                  | HGU3.63-SDS | 5¼    | 36-SDS       | 24-SDS     | 9895         | 14145     | EQQ3.62-SDS3       | 6     | 28-SDS       | 12-SDS     | 6365         | 18270     |
| 22½              | HGU3.63-SDS | 4½    | 24-SDS       | 16-SDS     | 7260         | 9450      | HGLT4              | 6     | 18-N54A      | 6-N54A     | 1745         | 11930     |
|                  | HGU3.63-SDS | 5¼    | 36-SDS       | 24-SDS     | 9895         | 14145     | EQQ3.62-SDS3       | 6     | 28-SDS       | 12-SDS     | 6365         | 18270     |
| 24               | HGU3.63-SDS | 4½    | 24-SDS       | 16-SDS     | 7260         | 9450      | HGLT4              | 6     | 18-N54A      | 6-N54A     | 1745         | 11930     |
|                  | HGU3.63-SDS | 5¼    | 36-SDS       | 24-SDS     | 9895         | 14145     | EQQ3.62-SDS3       | 6     | 28-SDS       | 12-SDS     | 6365         | 18270     |
| 25½<br>- 30      | HGU3.63-SDS | 5¼    | 36-SDS       | 24-SDS     | 9895         | 14145     | HGLT4              | 6     | 18-N54A      | 6-N54A     | 1745²        | 11930     |
|                  |             |       |              |            |              |           | EQQ3.62-SDS3       | 6     | 28-SDS       | 12-SDS     | 6365         | 18270     |

1. See notes on next page.

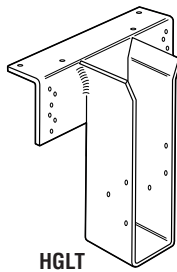
# 5½" ROSBORO X-BEAM - U.S./Allowable Load (lbs.)

| Beam Height      | Face Mount   |       |              |            |              |           | Top Flange         |       |              |            |              |           |
|------------------|--|-------|--------------|------------|--------------|-----------|--------------------|-------|--------------|------------|--------------|-----------|
|                  | Model  | B Dim | Header Nails | Beam Nails | Uplift (160) | Down Load | Model <sup>1</sup> | B Dim | Header Nails | Beam Nails | Uplift (160) | Down Load |
| Beam Width = 5½" |  |       |              |            |              |           |                    |       |              |            |              |           |
| 6                | HU66   | 2½    | 12-16d       | 6-16d      | 1345         | 1785      | B5.50X (H1=6)      | 2½    | 14-16d       | 6-16d      | 1010         | 3800      |
|                  | HU68   | 2½    | 14-16d       | 6-16d      | 1345         | 2085      | GLT6               | 5     | 10-N54A      | 6-N54A     | 1745         | 8165      |
| 7½               | HGUS5.50/8   | 4     | 36-16d       | 12-16d     | 3235         | 7460      | B5.50X (H1=7.5)    | 2½    | 14-16d       | 6-16d      | 1010         | 3800      |
|                  |  |       |              |            |              |           | GLT6               | 5     | 10-N54A      | 6-N54A     | 1745         | 8165      |
| 9                | HGUS5.50/8   | 4     | 36-16d       | 12-16d     | 3235         | 7460      | HB5.50X (H1=9)     | 3½    | 22-16d       | 10-16d     | 2610         | 5650      |
|                  |  |       |              |            |              |           | GLT6               | 5     | 10-N54A      | 6-N54A     | 1745         | 8165      |
| 9½               | HGUS5.50/8   | 4     | 36-16d       | 12-16d     | 3235         | 7460      | GLT6               | 5     | 10-N54A      | 6-N54A     | 1745         | 8165      |
|                  | MGU5.62-SDS  | 4½    | 24-SDS       | 16-SDS     | 7260         | 9450      | HGLT6              | 6     | 18-N54A      | 6-N54A     | 1745         | 11930     |
| 10½              | HGUS5.50/8   | 4     | 36-16d       | 12-16d     | 3235         | 7460      | GLT6               | 5     | 10-N54A      | 6-N54A     | 1745         | 8165      |
|                  | MGU5.62-SDS  | 4½    | 24-SDS       | 16-SDS     | 7260         | 9450      | HGLT6              | 6     | 18-N54A      | 6-N54A     | 1745         | 11930     |
| 11½              | HGUS5.50/12  | 4     | 56-16d       | 20-16d     | 5045         | 9600      | GLT6               | 5     | 10-N54A      | 6-N54A     | 1745         | 8165      |
|                  | HGU5.62-SDS  | 5¼    | 36-SDS       | 24-SDS     | 9895         | 14145     | HGLT6              | 6     | 18-N54A      | 6-N54A     | 1745         | 11930     |
| 12               | HGUS5.50/12  | 4     | 56-16d       | 20-16d     | 5045         | 9600      | GLT6               | 5     | 10-N54A      | 6-N54A     | 1745         | 8165      |
|                  | HGU5.62-SDS  | 5¼    | 36-SDS       | 24-SDS     | 9895         | 14145     | HGLT6              | 6     | 18-N54A      | 6-N54A     | 1745         | 11930     |
| 13½              | HGUS5.50/12  | 4     | 56-16d       | 20-16d     | 5045         | 9600      | HGLT6              | 6     | 18-N54A      | 6-N54A     | 1745         | 11930     |
|                  | HGU5.62-SDS  | 5¼    | 36-SDS       | 24-SDS     | 9895         | 14145     | EGQ5.50-SDS3       | 6     | 28-SDS       | 12-SDS     | 6365         | 18270     |
| 14               | HGUS5.50/12  | 4     | 56-16d       | 20-16d     | 5045         | 9600      | HGLT6              | 6     | 18-N54A      | 6-N54A     | 1745         | 11930     |
|                  | HGU5.62-SDS  | 5¼    | 36-SDS       | 24-SDS     | 9895         | 14145     | EGQ5.50-SDS3       | 6     | 28-SDS       | 12-SDS     | 6365         | 18270     |
| 15               | MGU5.62-SDS  | 4½    | 24-SDS       | 16-SDS     | 7260         | 9450      | HGLT6              | 6     | 18-N54A      | 6-N54A     | 1745         | 11930     |
|                  | HGU5.62-SDS  | 5¼    | 36-SDS       | 24-SDS     | 9895         | 14145     | EGQ5.50-SDS3       | 6     | 28-SDS       | 12-SDS     | 6365         | 18270     |
| 16               | MGU5.62-SDS  | 4½    | 24-SDS       | 16-SDS     | 7260         | 9450      | HGLT6              | 6     | 18-N54A      | 6-N54A     | 1745         | 11930     |
|                  | HHGU5.62-SDS   | 5¼    | 44-SDS       | 28-SDS     | 14550        | 17845     | EGQ5.50-SDS3       | 6     | 28-SDS       | 12-SDS     | 6365         | 18270     |
| 16½              | HGU5.62-SDS  | 5¼    | 36-SDS       | 24-SDS     | 9895         | 14145     | HGLT6              | 6     | 18-N54A      | 6-N54A     | 1745         | 11930     |
|                  | HHGU5.62-SDS   | 5¼    | 44-SDS       | 28-SDS     | 14550        | 17845     | EGQ5.50-SDS3       | 6     | 28-SDS       | 12-SDS     | 6365         | 18270     |
| 18               | HGU5.62-SDS  | 5¼    | 36-SDS       | 24-SDS     | 9895         | 14145     | HGLT6              | 6     | 18-N54A      | 6-N54A     | 1745         | 11930     |
|                  | HHGU5.62-SDS   | 5¼    | 44-SDS       | 28-SDS     | 14550        | 17845     | EGQ5.50-SDS3       | 6     | 28-SDS       | 12-SDS     | 6365         | 18270     |
| 19½              | HGU5.62-SDS  | 5¼    | 36-SDS       | 24-SDS     | 9895         | 14145     | EGQ5.50-SDS3       | 6     | 28-SDS       | 12-SDS     | 6365         | 18270     |
|                  | HHGU5.62-SDS   | 5¼    | 44-SDS       | 28-SDS     | 14550        | 17845     | EG5X (W=5.625)     | 6     | 8-MB1        | 2-MB1      | 8870         | 20895     |
| 21               | HGU5.62-SDS  | 5¼    | 36-SDS       | 24-SDS     | 9895         | 14145     | EGQ5.50-SDS3       | 6     | 28-SDS       | 12-SDS     | 6365         | 18270     |
|                  | HHGU5.62-SDS   | 5¼    | 44-SDS       | 28-SDS     | 14550        | 17845     | EG5X (W=5.625)     | 6     | 8-MB1        | 2-MB1      | 8870         | 20895     |
| 25½<br>-30       | Consider using top flange hanger or consult structural engineer. |       |              |            |              |           | EGQ5.50-SDS3       | 6     | 28-SDS       | 12-SDS     | 6365         | 18270     |
|                  |  |       |              |            |              |           | EG5X (W=5.625)     | 6     | 8-MB1        | 2-MB1      | 8870         | 20895     |

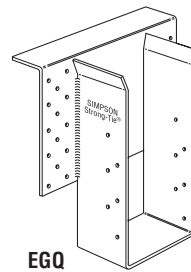
- The height (H) of the GLT, HGLT and EGQ hangers may not exceed the joist height for the tabulated loads.
- The HGLT uplift load applies when height of hanger (H) is 28" or less.



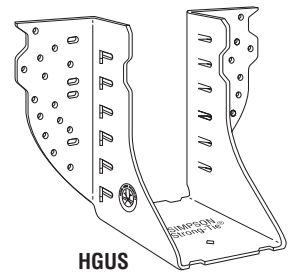
**HGU** – 7 gauge  
**HHGU** – 3 gauge  
The GU hangers are a high-capacity girder hanger designed for situations where the header and beam are flush at top.



**GLT & HGLT** –  
Top flange – 3 gauge  
Stirrup – 7 gauge  
This welded series provides high load carrying capacity and design flexibility and versatility. May be sloped, skewed and modified in other ways, and may be welded to steel I-beams.



**EGQ** – Top flange – 3 gauge  
Stirrup – 7 gauge  
A high capacity top flange connector designed for use with glulams and Structural Composite Lumber beams.



**HGUS** – 12 gauge  
**HHUS** – 14 gauge  
Features double shear nailing for high strength and lowest installed cost.

## SPECIAL ORDER PLATES

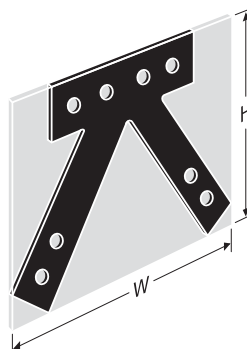
Simpson Strong-Tie can make a variety of flat and bent steel shapes, which include gusset plates for heavy timber trusses, custom ornamental shapes and retaining plates.

**MATERIAL:** 3 gauge maximum

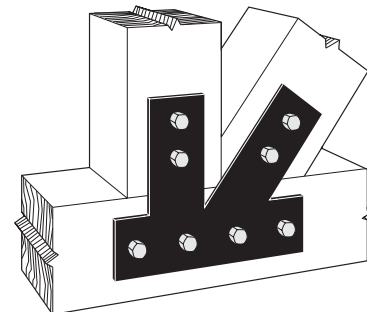
**FINISH:** Galvanized, textured powder-coated flat black, Simpson Strong-Tie® gray paint, stainless steel. Contact Simpson Strong-Tie for availability.

### TO OBTAIN A QUOTE:

- Supply a CAD drawing in .dxf format complete with plate dimensions, hole diameter and locations, steel thickness, desired finish (*Simpson Strong-Tie Gray Paint, Black Powder-Coat, HDG or raw steel*).
- Total plate shape and size up to maximum dimensions of 48"x48" (*approx. 1/16" tolerance*).
- Simpson Strong-Tie does not provide product engineering or load values for Special Order Plates.
- Contact Simpson Strong-Tie for pricing information.
- Refer to General Notes in the current *Wood Construction Connectors* catalog for additional information.



"W" and "H" indicate the envelope size of the steel shape.



**Typical Installation**  
(Plate shown has black powder-coat)

Simpson Strong-Tie maintains an extensive library of literature, providing information on a wide variety of subjects. You can access the library by visiting [www.strongtie.com](http://www.strongtie.com).

**Together We're Building Safer, Stronger Homes and Buildings**